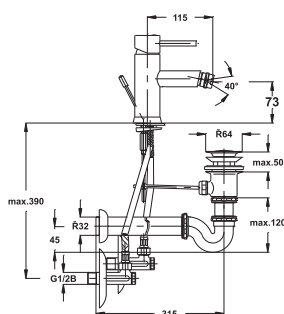


Sanitary Mixer FRESH

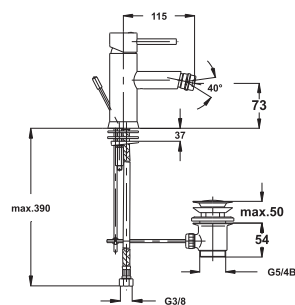
Bide Mixer

Datasheet

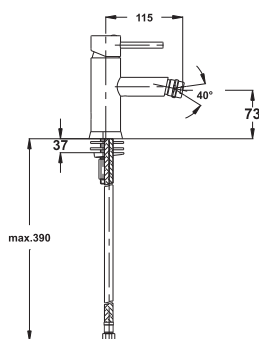
00535 00537
00536 00538



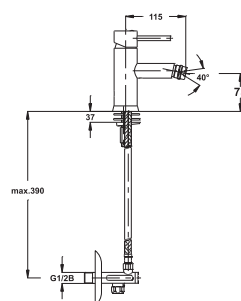
00535



00536



00537



00538

Model	Colour	Contents of package
00535	Chrome	Complete Basin trap, Ball valve
00536	Chrome	Basin trap, Ball valve
00537	Chrome	/
00538	Chrome	Ball valve

Contents and colour

Body: brass acc. EN 12164, chrom plated
Cartridge: 35 mm
Handle: brass, chrom plated
Sealing elements: rubber EPDM

Construction

Connections:	Flexible connecting hose for domestic tap fittings G3/8x450
Recommendable pressure:	Working pressure: up to 3 - 5 bar
Maximum pressure:	Working pressure: up to 8 bar
Minimum pressure:	Working pressure: up to 0,5 bar
Recommendable temp.:	Working temperature: 5 - 65°C
Maximum temperature:	Working temperature: 80°C

Specification

Sanitary Mixer FRESH

Basin Mixer

Datasheet

00035 00040
00038 01035
00039

You have to wash out all pipes before assembling.

Connect sanitary mixer and primary water pipe with flexible hose. Remove aerator and rotate mixer handle in totally open position. Slowly open pipe valves and manipulate with mixer handle in all positions.

Decante water heater boiler: Install the special mixer for decante water heater boiler. It is not allowed to exchange connection for hot and cold water.

Repairment of the mixer must be always performed by a qualified person. After assembling, we advice to wash out mixer for one hour.

We recommend to reduce water pressure over 5 bar with suitable pressure reducer.

**Instruction for
assembling
and maintenance**